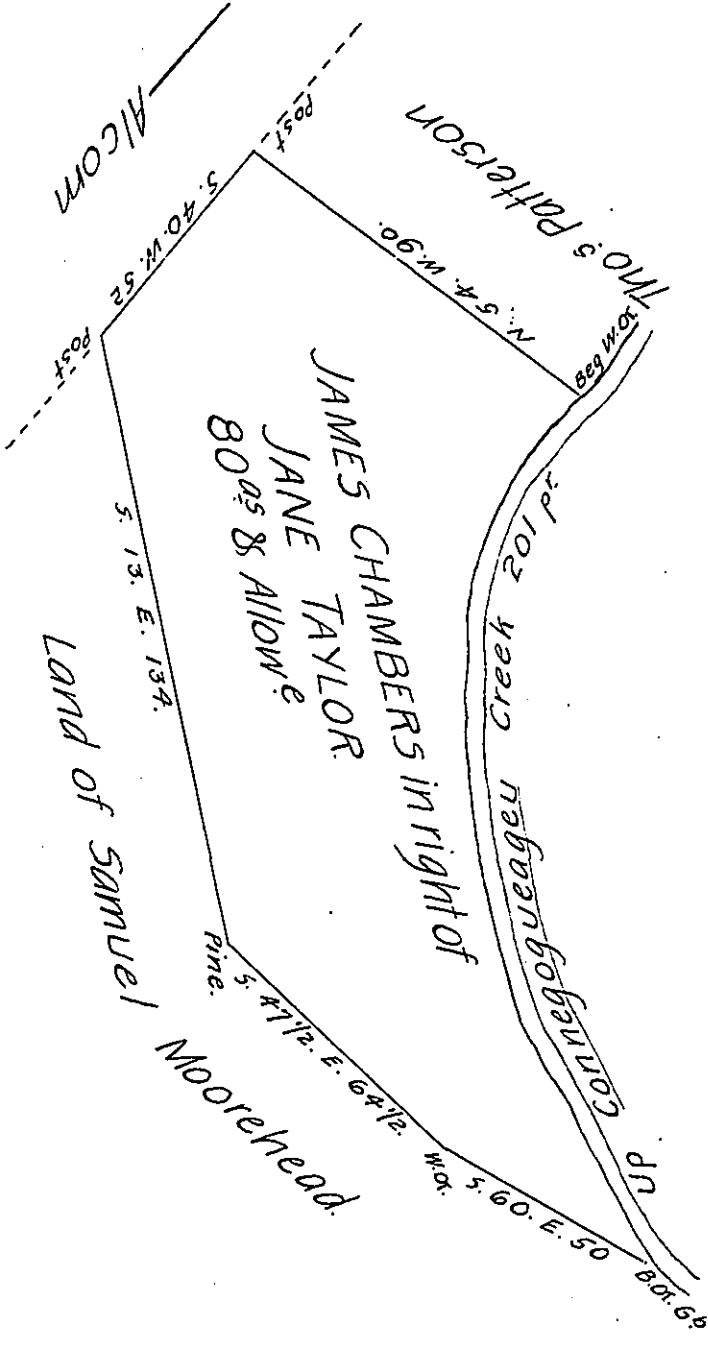


Courses on the Creek  
 Beg. at BOX 6<sup>b</sup> N. 31. W. 43  
 N. 15. W. 56  
 N. 5. W. 34  
 N. 15. E. 54.  
 N. 50. E. 14 to WOX.  
201 P<sup>f</sup>



A Draught of a Tract of Land Situate in Hamilton Township, Franklin, (late Cumberland) County. Containing Eighty acres and the usual Allowance of Six p. Cent for roads &c. Surveyed February 6<sup>th</sup> 1775, in pursuance of an Order of Survey granted to Jane Taylor Dated February 4<sup>th</sup> 1767, N<sup>o</sup> 2682, by an Assistant of John Armstrongs (formerly a Deputy Surveyor) as appears by an official Draught thereof remaining in my office.

Certified this 3<sup>rd</sup> day of January 1812.

Thomas Poe, D. S.

To Andrew Porter, Esquire,  
 Surveyor General of Penn<sup>a</sup>

IN TESTIMONY that the above is a copy of the original remaining on file in the Department of Internal Affairs of Pennsylvania, made conformably to an Act of Assembly approved the 16th day of February 1833, I have hereunto set my hand and caused the Seal of said Department to be affixed at Harrisburg, this twentieth day of December 1906.

*Leah A. Brown*  
 Secretary of Internal Affairs.